

Short Report



Youth hostel Mühlhausen | ©DJH Lvb. Thüringen e.V./Archiv

Youth hostel Mühlhausen

Auf dem Tonberg 1
99974 Mühlhausen

Tel: +49 3601 813318
Fax: +49 3601 813320

muehlhausen@jugendherberge.de
[http://
www.muehlhausen.jugendherberge.de](http://www.muehlhausen.jugendherberge.de)

Provider: DJH–LV–THÜR. E.V. – Jugendherberge Mühlhausen

Auf dem Tonberg 1
99974 Mühlhausen

Tel: +49 3601 813318

muehlhausen@jugendherberge.de

Welcome!

Mühlhausen Youth Hostel is located in a green oasis on the edge of Mühlhausen and provides an excellent view of the “City of Towers”. The hostel offers its guests 78 beds in rooms containing one to six beds. Six of the rooms have their own sink. The hostel’s extensive grounds offer visitors a multitude of opportunities for recreational activities and the old city centre is only a few minutes away. The hostel is the ideal starting point for a break full of different activities in Mühlhausen and the surrounding region, both of which offer a diverse range of highlights for young people and the young at heart. People with disabilities are more than welcome at the youth hostel, which also contains a room with a barrier-free design.

TEST RESULT

for

Jugendherberge Mühlhausen

99974 Mühlhausen, Certificate-ID: PA-02291-2022



This offer was classified according to
the criteria of the nationwide label

»Tourism for All«

and, in the period from

November 2022 – October 2025

is entitled to use the label

»Accessibility checked«

and the associated pictograms
in accordance with the contract.

Accessibility at a glance

- Unmarked parking spaces available for people with disabilities
- Building accessible without steps via ramp
- All rooms usable by guests are accessible without steps or via ramps
- 80 cm minimum width of all passages/doors
- WC for people with disabilities at rooms 7 and 11
- Large shower without thresholds
- Shower chair or seat available
- Assistance dogs welcome

Information for people with walking difficulties and wheelchair users

All areas relevant for testing meet the quality criteria of the label "**Accessibility certified – partially accessible for people with walking disabilities and for wheelchair user**".

Some **information on accessibility** are listed below. For detailed information please see the evaluation report.

- There is an unmarked parking space for people with disabilities (space size: 350 cm x 500 cm).
- The hostel can offer a parking space for people with disabilities directly at the entrance if required.
- The path from the car park to the entrance is 15 m long. It is not easily accessible.
- The building is accessible without steps via a ramp. The ramp has a maximum gradient of 6% and a total length of 4.4 metres.
- All rooms and facilities that can be used and raised for the guest are accessible without steps or via a ramp.
- All doors/passages that can be used and raised for the guest are at least 80 cm wide.
- The reception desk is 127 cm high. There is another, equivalent communication option available while seated.
- In the dining room there are tables that are accessible from underneath (maximum height 80 cm, accessible from underneath at a height of 67 cm and a depth of 30 cm).
- There is no public toilet designed for people with disabilities.

Bedroom 7 (multi-bed room)

- The movement areas are:
in front of/behind the door and in front of essential, fixed furnishings (e.g. wardrobe) 180 cm x 340 cm;
to the left of the bed 180 cm x 340 cm, to the right the bed is against the wall.
- The bed is 38 cm high.
- A nursing bed is not available.

Bedroom 11 (multi-bed room)

- The movement areas are:
in front of/behind the door 300 cm x 180 cm;
in front of essential, fixed furnishings (e.g. wardrobe) 220 cm x 260 cm;
to the right of the bed 220 cm x 190 cm, to the left the bed is against the wall.
- The bed is 38 cm high.
- A nursing bed is not available.

Shared bathroom for rooms 7 and 11

- The manoeuvring spaces are:
in front of/behind the door, in front of the toilet and

in front of the washbasin at least 140 cm x 150 cm;
left of the toilet 100 cm x 60 cm and right of the toilet 26 cm x 60 cm.

- There is a grab rail on the left side of the toilet. The grab rail can be flipped-up. A hanging grab rail on the ceiling can be positioned differently on the WC and shower.
- The sink is wheelchair compatible.
- The mirror can be seen while standing or sitting.
- The shower is accessible without thresholds.
- The manoeuvring space in the shower is 190 cm x 140
- A shower seat is available or can be provided if required.
- There are horizontally mounted grab rails available in the shower.
- An alarm trigger is available.

Information for people with hearing impairments and deaf people

Some **information on accessibility** are listed below. For detailed information please see the evaluation report.

- There is no clearly visible alarm.
- There is no audio induction loop system.
- In the dining room there are tables with bright and glare-free lighting, on which there are no lamps standing or hanging that interfere with the field of vision or eye contact.
- There is a seating area with low background noises (e.g. corner seating, separate room).

Bedroom 7 and 11 (multi-bed room)

- There is at least one electrical outlet available near the bed in room 6 and 7.
- W-LAN is offered.

Information for visually impaired and blind people

Some **information on accessibility** are listed below. For detailed information please see the evaluation report.

- Assistance dogs are allowed after arrangement.

- External paths have tactilely detectable sidewalk boundaries.
- The entrance is visually rich in contrast and recognizable by a tactile change of floor covering.
- All evaluated and usable areas for the guest are well illuminated, i.e. bright and glare-free.
- There are no visually contrasting or tactilely detectable floor indicators available.
- The signage is designed in clearly legible and contrasting font.
- Information is not available in Braille or prismatic font.

Information for guests with cognitive impairments

Some **information on accessibility** are listed below. For detailed information please see the evaluation report.

- The name or logo of the establishment is clearly recognizable from the outside.
- The objectives of the paths are within sight or an uninterrupted guidance system is available.
- There is no colored or pictorial guidance system available.
- The dishes are visibly presented (buffet, bar).
- There is no information in easy language.
- Information is not displayed with pictograms or images.

Information for allergy sufferers and people with food intolerances

We have compiled some **information for allergy sufferers** below. Detailed information can be found in the test report.

Pet hair

- Pet-free rooms available.

Food intolerances

- Information available for allergy sufferers and guests with special dietary requirements (e.g. restaurants, health food stores).
- Information on ingredients of food used (also available upon request).
- Food free of flavor enhancers, organic food, food free of gluten, fructose, food free of major allergens and lactose, vegetarian and vegan food: on request.

Comfort for all generations

We have compiled some **information on accessibility** below. Detailed information can be found in the test report.

- Parking spaces available.
- Name or logo of the youth hostel are clearly recognizable from the outside.
- The entrance is visually contrasting.
- The building is accessible without steps via a ramp. The ramp at the entrance has a maximum slope of 6% and a total length of 4.4 meters.
- All rooms and facilities that can be used and elevated for guests are accessible without steps or via a ramp. The ramp at the dining room has a slope of 6% and a total length of 1.6 m.
- All doors/passages that can be used by the guest and are raised are at least 80 cm wide.
- All raised and usable areas for the guest are well lit, i.e. bright and glare-free.
- Signage is designed in legible and high-contrast lettering.
- Trail destinations are in view or an uninterrupted wayfinding system is in place.
- There is no visually prominent alarm.
- Tables with bright, glare-free lighting are provided in the dining area. There is a seating area with low ambient noise (e.g., sitting area, separate room).
- Ability to store medications in a cool place.
- Possibility to prepare meals individually according to the quantity needed.

Dormitory 7 (multi-bed room)

- The movement areas are: in front of/behind the door and in front of essential, fixed furnishings (e.g. wardrobe) 180 cm x 340 cm; to the left of the bed 180 cm x 340 cm, to the right the bed is against the wall.
- The bed is 38 cm high.
- W-LAN is provided.

Bedroom 11 (shared room)

- The movement areas are: in front of/behind the door 300 cm x 180 cm; in front of essential, fixed furnishings (e.g. wardrobe) 220 cm x 260 cm; to the right of the bed 220 cm x 190 cm, to the left the bed is against the wall.
- The bed is 38 cm high.
- Common bathroom for rooms 7 and 11
- The movement areas are: in front of/behind the door, in front of the WC and in front of the sink at least 140 cm x 150 cm; to the left of the WC 110 cm x 60 cm, there is no movement area to the right.
- There is a grab rail to the left of the WC. The grab rail can be folded up. A suspended grab rail mounted on the ceiling can be positioned differently at the WC and at the shower.
- The shower is accessible without steps.
- The movement area in the shower is 130 cm x 120 cm.

- A shower seat is available or can be provided if required.
- Grab bars are provided in the shower.
- There is an alarm trigger available.

Image Gallery

We have put together some photos from the company / offer for you. You can find more photos in the detailed reports.



Parking

©Jennifer Frömmter



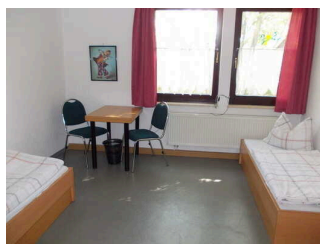
Access to the car park

©Jennifer Frömmter



Dining room / Restaurant

©Jennifer Frömmter



Bedroom room 7

©Jennifer Frömmter



Sanitary room

©Jennifer Frömmter



Grab rail in the sanitary room

©Jennifer Frömmter



Bedroom Room 11

©Jennifer Frömmter



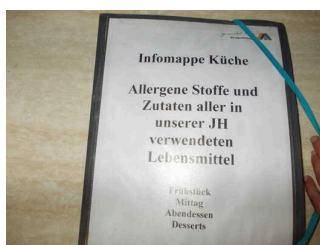
Conference room

©Jennifer Frömmter



Play area in the garden

©Jennifer Frömmter



Information allergies and food intolerances

©Jennifer Frömmter

Information on the "Tourism for All" labeling system

All establishments and locations certified with the label "Tourism for All" meet the following quality criteria:

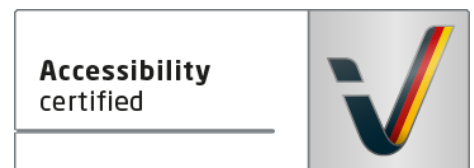
- Data and information on accessibility are collected and checked on site by **external, specially trained evaluators**. The method is not based on self-assessments.
- Data on accessibility is available **in detail** and can be viewed by the guests.
- At least one staff member has successfully passed a **training** on "**Accessibility as a comfort and quality feature**".

The labeling – explanation of the logos and pictograms

The label "**Information about Accessibility**" indicates that detailed and verified information on accessibility is available for all groups of people.



The label "**Accessibility certified**" is based on "Information about Accessibility". It means that the quality criteria defined for specific groups of people are met partially or completely.



The label "**Accessibility certified**" is available in two requirement levels:

"Accessibility certified: partially accessible".

The quality criteria are partially fulfilled for the pictured group of people, i.e. the establishment/location is partially accessible for wheelchair users. The "i" in the pictogram indicates that it is recommended to read again carefully whether the offer meets all (your oder the guest's) individual requirements.



"Accessibility certified: accessible".

The quality criteria are fulfilled for the pictured group of people, i.e. the establishment/location is accessible for wheelchair users.



There are defined quality criteria for **seven groups of people** and a **specific pictogram** for each group.

People with walking disabilities



Wheelchair users



People with hearing impairment



Deaf people



People with visual impairments



Blind people



People with cognitive impairments

